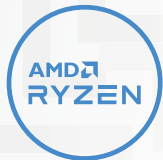


LEGION 5 Pro (16")

PRO-LEVEL PERFORMANCE.

Engineered to deliver devastation in and out of the arena, the Lenovo™ Legion 5 Pro features the latest generation AMD processing and NVIDIA® GeForce RTX™ dishing out high-resolution gaming at optimal-frame-rates with the Legion AI Engine and optimally cooled via the Legion Coldfront 3.0 thermal system. The world's first 16" QHD gaming laptop with up to 165 Hz refresh rate sets up a killer "winning zone" that towers over your enemies' sight-lines, giving you an extra edge in screen real estate by upping your peripheral vision. Combined with Nahimic 3D audio that pinpoints their footsteps in space, you'll be able to see and hear any scrub headed your way before they even hit firing range. Enjoy elite gaming experiences on the Legion 5 Pro, available in Storm Grey or Stingray White.

WHY YOU SHOULD BUY THE LENOVO LEGION 5 PRO (16")



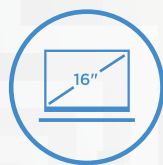
Escalate your game

Blast past serious esports challengers with up to 8 high-performance cores in the AMD Ryzen™ 7 5800H mobile processor, delivering a combination of lightning-fast frame rates with uncompromised battery life.



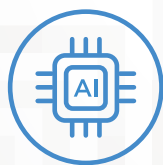
RTX. It's On.

NVIDIA® GeForce RTX™ 30 Series graphics bring 2nd Generation Ray Tracing, 3rd Generation AI Tensor Cores and more for a huge leap in graphical performance.



Serious frame advantage

Dominate the competition with maximum screen real estate. Enjoy QHD resolution, 165 Hz refresh rate, a 16:10 aspect ratio with best-in-class color accuracy and high dynamic range.



Boost framerates with the Lenovo Legion AI Engine

Exclusive to Lenovo Legion laptops, the Lenovo Legion AI Engine, a system of AI solutions, dynamically shifts power between the CPU and GPU for more FPS on today's top AAA titles.



WWW.LENOVO.COM

 **Fortuna Data**

01256 331614
solutions@data-storage.uk
www.data-storage.uk

Servers - Storage - Workstations - Networking
Software - Hyperconverged - Software Defined



Lenovo[™]

LEGION 5 Pro (16")

SPECIFICATIONS

Lenovo Legion 5 Pro 16ACH-06*

PERFORMANCE

Mobile Processor

Up to AMD Ryzen™ 7 5800H

Operating System

Windows 10 Pro
Windows 10 Home

Graphics

Up to NVIDIA® GeForce RTX™ 3070

Memory

3200 MHz DDR4 : Up to 32 GB

Storage

M.2 NVMe PCIe SSD : Up to 2 TB

Battery¹

Up to 8 Hours (Target)²
Rapid Charge Pro

Power Adapter

Starting at 230W Slim Adapter

DESIGN

Display

16" QHD (2560 x 1600) IPS; 16:10 (165 Hz /
3 ms Response Time³ / 100% sRGB / 500 nits /
Up to VESA DisplayHDR™ 400 Certified /
Dolby Vision® Support / NVIDIA® G-SYNC™)

Dimensions (W x D x H) (Target)⁴

(mm) : 356 x 264.2 x 21.7–26.85
(inches): 14.01" x 10.4" x 0.86" - 1.1"

Weight (Target)⁴

Starting at 2.45 kg (5.4 lbs)

Backlit Keyboard

White Backlight
Blue Backlight⁵
4-Zone RGB Backlight⁶

Colors

Storm Grey
Stingray White⁶

CONNECTIVITY

Webcam

Built-in HD Webcam (720p) with E-Shutter

WLAN

2x2 WiFi 802.11 ax

Bluetooth⁷

Bluetooth® 5.1

Audio

2 x 2W Harman® Speaker with Nahimic Audio

I/O (Input/Output) Ports

Left Side

1 x USB Type-C™ (USB 3.2⁷ Gen 2,
DisplayPort™ 1.4)
1 x Audio Jack

Right Side

1 x USB 3.2⁷ Gen 1
1 x E-Shutter Button

Rear

3 x USB Type-A 3.2⁷ Gen 1 (1 x Always-On 5V)
1 x USB Type-C™ (USB 3.2⁷ Gen 2,
DisplayPort™ 1.4, Power Delivery)
1 x HDMI™ 2.1
1 x RJ45 Ethernet
1 x DC-In

PRELOADED SOFTWARE

- Lenovo Vantage
- Lenovo PC Manager
- McAfee LiveSafe™
- Lenovo Antivirus
- Microsoft Office Trial⁸
- Power2Go



¹ All battery life claims are approximate and based on results using the MobileMark® 2018 v1.0.2.46 battery life benchmark test. Actual battery life will vary and depends on many factors such as product configuration and usage, software use, wireless functionality, power management settings, and screen brightness. The maximum capacity of the battery will decrease with time and use.

² Final battery life to be finalized Spring 2021 or Product SS 2021.

³ With Overdrive (OD).

⁴ Final product spec info available Spring 2021.

⁵ Available only on Stingray White version.

⁶ Optional.

⁷ The actual transfer speed of the USB 3.2 will vary and, depending on many factors, such as the processing capability of host and peripheral devices, file attributes and other factors related to system configuration and your operating environments, will be slower than a speed of 20 Gbit/s.

⁸ Except Japan, India and China.

LENOVO SERVICES

max 3 YR extension/upgr:

Warranty Upgrades

Onsite Service maximizes PC uptime and productivity by providing convenient, fast repair service at your place.¹

Warranty Extensions

This fixed-term, fixed-cost service helps you accurately budget for PC expenses, protect your investment, and lower the cost of ownership over time.¹

Accidental Damage Protection

Protect your investment from operational or structural damage caused by common accidents like drops, spills, or electrical surges. This protection plan helps with predictable budgeting, minimizes unexpected repair costs and provides significant savings relative to the cost of non-covered repairs.^{1,2}

Premium Care³

You will get direct access via dedicated support hotline to highly skilled technicians helping with software and connectivity issues, ensure your case is managed from start to finish. Onsite next business day is the standard part of the Premium Care service.

¹ Up to 3 years total duration

² May not be available in all regions

³ Available in UK, IE, FR, DE, AT, CH, BE, NL, LUX, SE, IL, DK, NO, FI, CZ, SK, ES, PT, IT, SA.

OPTIONS & ACCESSORIES



Lenovo Legion
M600 Wireless
Gaming Mouse



Legion M600
Wireless Gaming
Headset



Lenovo Legion
15.6" Recon Gaming
Backpack

* Example of Lenovo
catalogue naming
convention

Legion	5 P	16 A C H	06
Sub-brand	Position	Screen size or volume (litre)	Platform (e.g. API = Picasso)

AMD platform codes

Bristol Ridge-L: ABL, Beema: ABM, Bristol Ridge: ABR, Carizzo-L: ACL, Carizzo: ACZ,
Godavari: AGR, Kaveri: AKV, Stoney Ridge: ASR, Stoney Ridge: AST (NB), Summit Ridge: ASU,
Raven Ridge: ARR, Picasso: API, Ryzen: ARE, Dali: ADA, Matisse: ARH, Xxxxx: ACH.



WWW.LENOVO.COM

Lenovo reserves the right to alter product offerings and specifications at any time, without notice. Lenovo makes every effort to ensure accuracy of all information but is not liable or responsible for any editorial, photographic or typographic errors. All images are for illustration purposes only. For full Lenovo product, service and warranty specifications visit www.lenovo.com. Lenovo makes no representations or warranties regarding third party products or services. ©2020 Advanced Micro Devices, Inc. All rights reserved. AMD, the AMD Arrow logo, Athlon, Radeon and combinations thereof, are trademarks of Advanced Micro Devices, Inc. Microsoft and Windows are registered trademarks of Microsoft Corporation in the United States and/or other countries. 3DMark is a registered trademark of Futuremark Corporation. Other names are for informational purposes only and may be trademarks of their respective owners. Other company, product and service names may be trademarks or service marks of others. Visit www.lenovo.com/lenovo/us/en/safecomp/ periodically for the latest information on safe and effective computing. ©2020 Lenovo. All rights reserved.



Lenovo™