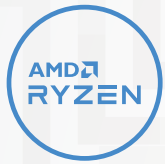


LEGION 5 (17")

PURPOSE-BUILT GAMING PERFORMANCE.

Experience today's top AAA games on the Lenovo™ Legion 5. Inside the clean, minimalist chassis of the Legion 5, available in Phantom Blue, is everything you ever need to compete on equal footing with the pros, including the latest generation of AMD processing and NVIDIA® GeForce RTX™ graphics for performance that's AI-optimized by the Legion AI Engine powering the revolutionary Legion Coldfront 3.0 and Q Control. Excel across every AAA title with a 17" FHD display at up to 144 Hz refresh rate, featuring 72% NTSC color accuracy and support for Dolby Vision®, as well as the new Nahimic 3D audio and the legendary Legion Truestrike keyboard so you can strike with pinpoint precision.

WHY YOU SHOULD BUY THE LENOVO LEGION 5 (17")



Escalate your game

Welcome to next-generation gaming with up to 8 high-performance cores in the AMD Ryzen™ 7 5800H mobile processor, delivering a combination of lightning-fast frame rates with uncompromised battery life.



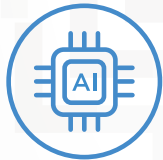
RTX. It's On.

NVIDIA® GeForce RTX™ 30 Series graphics bring 2nd Generation Ray Tracing, 3rd Generation AI Tensor Cores and more for a huge leap in graphical performance.



Fast refresh, deep colors

Legion 5 delivers speed and color clarity for full-fidelity gaming. Enjoy up to 144 Hz refresh rate, Dolby Vision® support and 72% NTSC, all on a 17.3" FHD (1920 x 1080) IPS display.



Boost framerates with the Lenovo Legion AI Engine

Exclusive to Lenovo Legion laptops, the Lenovo Legion AI Engine, a system of AI solutions, dynamically shifts power between the CPU and GPU for more FPS on today's top AAA titles.



 Fortuna Data

01256 331614

solutions@data-storage.uk

www.data-storage.uk

Servers - Storage - Workstations - Networking
Software - Hyperconverged - Software Defined



WWW.LENOVO.COM



Lenovo™

LEGION 5 (17")

SPECIFICATIONS

Lenovo Legion 5 17ACH-06*

PERFORMANCE

Mobile Processor

Up to AMD Ryzen™ 7 5800H

Operating System

Windows 10 Pro
Windows 10 Home

Graphics

Up to NVIDIA® GeForce RTX™ 3070

Memory

3200 MHz DDR4 : Up to 16 GB

Storage

M.2 NVMe PCIe SSD : Up to 1 TB

Battery¹

Up to 8 Hours (Target)²
Rapid Charge Pro (Supported)

Power Adapter

Starting at 230W Adapter

DESIGN

Display

1. 17.3" FHD (1920 x 1080) IPS (144 Hz / 72% NTSC / 300 nits / Dolby Vision® Enabled)

Dimensions (W x D x H) (Target)³

(mm) : 398.6 x 290 x 24.3 - 26.2
(inches) : 15.7" x 11.41" x 0.95" - 1.03"

Weight (Target)³

Starting at 2.98 kg (6.57 lbs)

Backlit Keyboard

White Backlight

Color

Phantom Blue

CONNECTIVITY

Webcam

Built-in HD Webcam (720p) with Privacy Shutter

WLAN

2x2 802.11 ax

Bluetooth®

Bluetooth® 5.1

Audio

2 x 2W Harman® Speaker with Nahimic Audio

I/O (Input/Output) Ports

Left Side

1 x USB Type-C™ (USB 3.2⁴ Gen 2, DisplayPort™ 1.4)

1 x Audio Jack

Right Side

1 x USB 3.2⁴ Gen 1

1 x Card Reader

1 x E-Shutter Button

Rear

3 x USB Type-A 3.2⁴ Gen 1 (1 x Always-On 5V)

1 x USB Type-C™ (USB 3.2⁴ Gen 2, DisplayPort™ 1.4, Power Delivery)

1 x HDMI™ 2.1

1 x RJ45 Ethernet

1 x DC-In

PRELOADED SOFTWARE

- Lenovo Vantage
- Lenovo PC Manager
- Lenovo Nerve Center
- McAfee LiveSafe™
- Lenovo Antivirus
- Microsoft Office Trial⁵
- Power2Go



¹ All battery life claims are approximate and based on results using the MobileMark® 2018 v1.0.2.46 battery life benchmark test. Actual battery life will vary and depends on many factors such as product configuration and usage, software use, wireless functionality, power management settings, and screen brightness. The maximum capacity of the battery will decrease with time and use.

² Final battery life to be finalized Spring 2021 or Product SS 2021.

³ Final product spec info available Spring 2021.

⁴ The actual transfer speed of the USB 3.2 will vary and, depending on many factors, such as the processing capability of host and peripheral devices, file attributes and other factors related to system configuration and your operating environments, will be slower than a speed of 20 Gbit/s.

⁵ Except Japan, India and China.

LENOVO SERVICES

max 4 YR extension/upgr):

Warranty Upgrades

Onsite Service maximizes PC uptime and productivity by providing convenient, fast repair service at your place.¹

Warranty Extensions

This fixed-term, fixed-cost service helps you accurately budget for PC expenses, protect your investment, and lower the cost of ownership over time.¹

Accidental Damage Protection

Protect your investment from operational or structural damage caused by common accidents like drops, spills, or electrical surges. This protection plan helps with predictable budgeting, minimizes unexpected repair costs and provides significant savings relative to the cost of non-covered repairs.^{1,2}

Premium Care³

You will get direct access via dedicated support hotline to highly skilled technicians helping with software and connectivity issues, ensure your case is managed from start to finish. Onsite next business day is the standard part of the Premium Care service.

¹ Up to 4 years total duration
² May not be available in all regions

³ Available in UK, IE, FR, DE, AT, CH, BE, NL, LUX, SE, IL, DK, NO, FI, CZ, SK, ES, PT, IT, SA.



WWW.LENOVO.COM

AMD platform codes

Bristol Ridge-L: ABL, Beema: ABM, Bristol Ridge: ABR, Carizzo-L: ACL, Carizzo: ACZ, Godavari: AGR, Kaveri: AKV, Stoney Ridge: ASR, Stoney Ridge: AST (NB), Summit Ridge: ASU, Raven Ridge: ARR, Picasso: API, Ryzen: ARE, Dali: ADA, Matisse: ARH, XXXX: ACH.

Lenovo reserves the right to alter product offerings and specifications at any time, without notice. Lenovo makes every effort to ensure accuracy of all information but is not liable or responsible for any editorial, photographic or typographic errors. All images are for illustration purposes only. For full Lenovo product, service and warranty specifications visit www.lenovo.com. Lenovo makes no representations or warranties regarding third party products or services. ©2020 Advanced Micro Devices, Inc. All rights reserved. AMD, the AMD Arrow logo, Athlon, Radeon and combinations thereof, are trademarks of Advanced Micro Devices, Inc. Microsoft and Windows are registered trademarks of Microsoft Corporation in the United States and/or other countries. 3DMark is a registered trademark of Futuremark Corporation. Other names are for informational purposes only and may be trademarks of their respective owners. Other company, product and service names may be trademarks or service marks of others. Visit www.lenovo.com/lenovo/us/en/safecom/ periodically for the latest information on safe and effective computing. ©2020 Lenovo. All rights reserved.

OPTIONS & ACCESSORIES



Lenovo Legion M300 RGB Gaming Mouse



Lenovo Legion H300 Stereo Gaming Headset



Lenovo Legion 15.6" Recon Gaming Backpack

* Example of Lenovo catalogue naming convention

Legion	5	17ACH-06
Sub-brand	Position	Screen size or volume (litre)
		Platform (e.g. API = Picasso)
		Generation



Lenovo™