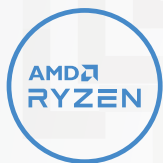


# LEGION 5 (15")

## PURPOSE-BUILT GAMING PERFORMANCE.

Experience today's top AAA games on the Lenovo™ Legion 5. Inside the clean, minimalist chassis of the Legion 5 is everything you ever need to compete on equal footing with the pros, including the latest generation of AMD processing and NVIDIA® GeForce RTX™ graphics for performance that's AI-optimized by the Legion AI Engine powering the revolutionary Legion Coldfront 3.0 and Q Control. Excel across every AAA title with a 15" FHD display at up to 165 Hz refresh rate, featuring 100% sRGB color accuracy and support for Dolby Vision®, as well as the new Nahimic 3D audio and the legendary Legion TrueStrike keyboard so you can strike with pinpoint precision. Enjoy purpose-built performance on the Legion 5, available in Phantom Blue or Stingray White.

### WHY YOU SHOULD BUY THE LENOVO LEGION 5 (15")



#### Escalate your game

Welcome to next-generation gaming with up to 8 high-performance cores in the AMD Ryzen™ 7 5800H mobile processor, delivering a combination of lightning-fast frame rates with uncompromised battery life.



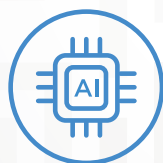
#### RTX. It's On.

NVIDIA® GeForce RTX™ 30 Series graphics bring 2<sup>nd</sup> Generation Ray Tracing, 3<sup>rd</sup> Generation AI Tensor Cores and more for a huge leap in graphical performance.



#### Fast refresh, deep colors

Legion 5 delivers speed and color clarity for full-fidelity gaming. Enjoy up to 165 Hz refresh rate, <5 ms response time and 100% sRGB all on a 15.6" FHD (1920 x 1080) IPS display.



#### Boost framerate with the Lenovo Legion AI Engine

Exclusive to Lenovo Legion laptops, the Lenovo Legion AI Engine, a system of AI solutions, dynamically shifts power between the CPU and GPU for more FPS on today's top AAA titles.



 **Fortuna Data**

01256 331614

[solutions@data-storage.uk](mailto:solutions@data-storage.uk)

[www.data-storage.uk](http://www.data-storage.uk)

Servers - Storage - Workstations - Networking  
Software - Hyperconverged - Software Defined



[WWW.LENOVO.COM](http://WWW.LENOVO.COM)



**Lenovo**<sup>™</sup>

# LEGION 5 (15")

## SPECIFICATIONS

Lenovo Legion 5 15ACH-06\*

### PERFORMANCE

#### Mobile Processor

Up to AMD Ryzen™ 7 5800H

#### Operating System

Windows 10 Pro  
Windows 10 Home

#### Graphics

Up to NVIDIA® GeForce RTX™ 3070

#### Memory

3200 MHz DDR4 : Up to 32 GB

#### Storage

M.2 NVMe PCIe SSD: Up to 2 TB

#### Battery<sup>1</sup>

Up to 8 Hours (Target)<sup>2</sup>;  
7.1 Hours (60 WHr) (Target)<sup>2</sup>  
Rapid Charge Pro (Supported)<sup>3</sup>

#### Power Adapter

Starting at 170W Slim Adapter

### DESIGN

#### Display

- 15.6" FHD (1920 x 1080) IPS (165 Hz / <5 ms Response Time<sup>4</sup> / 100% sRGB / 300 nits / Dolby Vision® Supported)
- 15.6" FHD (1920 x 1080) IPS (120 Hz / 45% NTSC / 250 nits)
- 15.6" FHD (1920 x 1080) IPS (60 Hz / 100% sRGB / 300 nits)

#### Dimensions (W x D x H) (Target)<sup>5</sup>

(mm) : 363.06 x 259.61 x 23.57-26.1  
(inches) : 14.3" x 10.22" x 0.93"-1.03"

#### Weight (Target)<sup>5</sup>

Starting at 2.4 kg (5.3 lbs)

#### Backlit Keyboard

White Backlight  
Blue Backlight<sup>6</sup>  
4-Zone RGB Backlight<sup>7</sup>

#### Colors

Phantom Blue  
Stingray White<sup>7</sup>

### CONNECTIVITY

#### Webcam

Built-in HD Webcam (720p) with E-Shutter

#### WLAN

2x2 WiFi 6 (802.11 ax)

#### Bluetooth<sup>8</sup>

Bluetooth® 5.1

#### Audio

2 x 2W Harman Kardon® Speakers with Nahimic Audio for Gamers

#### I/O (Input/Output) Ports

##### Left Side

1 x USB Type-C™ (USB 3.2® Gen 2, DisplayPort™ 1.4)  
1 x Audio Jack

##### Right Side

1 x USB 3.2® Gen 1  
1 x System LED  
1 x E-Shutter Button

##### Rear

3 x USB Type-A 3.2® Gen 1  
(1 x Always-On 5V)  
1 x USB Type-C™ (USB 3.2® Gen 2, DisplayPort™ 1.4, Power Delivery)  
1 x HDMI™ 2.1  
1 x RJ45 Ethernet  
1 x DC-In

### PRELOADED SOFTWARE

- Lenovo Vantage
- Lenovo PC Manager
- Lenovo Nerve Center
- McAfee LiveSafe™
- Lenovo Antivirus
- Microsoft Office Trial<sup>9</sup>
- Power2Go



<sup>1</sup> All battery life claims are approximate and based on results using the MobileMark® 2018 v1.0.2.46 battery life benchmark test. Actual battery life will vary and depends on many factors such as product configuration and usage, software use, wireless functionality, power management settings, and screen brightness. The maximum capacity of the battery will decrease with time and use.

<sup>2</sup> Final battery life to be finalized Spring 2021 or Product SS 2021.

<sup>3</sup> 1 hour 0-80%.

<sup>4</sup> With Overdrive (OD).

<sup>5</sup> Final product spec info available Spring 2021.

<sup>6</sup> Available only on Stingray White version.

<sup>7</sup> Optional.

<sup>8</sup> The actual transfer speed of the USB 3.2 will vary and, depending on many factors, such as the processing capability of host and peripheral devices, file attributes and other factors related to system configuration and your operating environments, will be slower than a speed of 20 Gbit/s.

<sup>9</sup> Except Japan, India and China.

## LENOVO SERVICES

max 4 YR extension/upgr):

#### Warranty Upgrades

Onsite Service maximizes PC uptime and productivity by providing convenient, fast repair service at your place.<sup>1</sup>

#### Warranty Extensions

This fixed-term, fixed-cost service helps you accurately budget for PC expenses, protect your investment, and lower the cost of ownership over time.<sup>1</sup>

#### Accidental Damage Protection

Protect your investment from operational or structural damage caused by common accidents like drops, spills, or electrical surges. This protection plan helps with predictable budgeting, minimizes unexpected repair costs and provides significant savings relative to the cost of non-covered repairs.<sup>1,2</sup>

#### Premium Care<sup>3</sup>

You will get direct access via dedicated support hotline to highly skilled technicians helping with software and connectivity issues, ensure your case is managed from start to finish. Onsite next business day is the standard part of the Premium Care service.

<sup>1</sup> Up to 4 years total duration

<sup>2</sup> May not be available in all regions

<sup>3</sup> Available in UK, IE, FR, DE, AT, CH, BE, NL, LUX, SE, IL, DK, NO, FI, CZ, SK, ES, PT, IT, SA.

\* Example of Lenovo catalogue naming convention



#### AMD platform codes

Bristol Ridge-L: ABL, Beema: ABM, Bristol Ridge: ABR, Carizzo-L: ACL, Carizzo: ACZ, Godavari: AGR, Kaveri: AKV, Stoney Ridge: ASR, Stoney Ridge: AST (NB), Summit Ridge: ASU, Raven Ridge: ARR, Picasso: API, Ryzen: ARE, Dali: ADA, Matisse: ARH, Xxxx: ACH.



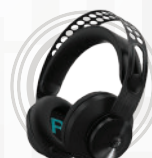
WWW.LENOVO.COM

Lenovo reserves the right to alter product offerings and specifications at any time, without notice. Lenovo makes every effort to ensure accuracy of all information but is not liable or responsible for any editorial, photographic or typographic errors. All images are for illustration purposes only. For full Lenovo product, service and warranty specifications visit [www.lenovo.com](http://www.lenovo.com). Lenovo makes no representations or warranties regarding third party products or services. ©2020 Advanced Micro Devices, Inc. All rights reserved. AMD, the AMD Arrow logo, Athlon, Radeon and combinations thereof, are trademarks of Advanced Micro Devices, Inc. Microsoft and Windows are registered trademarks of Microsoft Corporation in the United States and/or other countries. 3DMark is a registered trademark of Futuremark Corporation. Other names are for informational purposes only and may be trademarks of their respective owners. Other company, product and service names may be trademarks or service marks of others. Visit [www.lenovo.com/lenovo/us/en/safecomp/](http://www.lenovo.com/lenovo/us/en/safecomp/) periodically for the latest information on safe and effective computing. ©2020 Lenovo. All rights reserved.

## OPTIONS & ACCESSORIES



Lenovo Legion M300 RGB Gaming Mouse



Lenovo Legion H300 Stereo Gaming Headset



Lenovo Legion 15.6" Recon Gaming Backpack



Lenovo™